



**CONROY**  
GOLD AND NATURAL RESOURCES

# Conroy Gold and Natural Resources plc

# DISCLAIMER

The content of information contained in this Presentation has not been approved by an authorised person within the meaning of the Financial Services and Markets Act 2000 ("FSMA") or an authorised investment business firm within the meaning of the Irish Investment Intermediaries Act 1995 (as amended) ("IAA"). Reliance upon this Presentation for the purpose of engaging in any investment activity may expose an individual to a significant risk of losing all of the property or other assets invested. If any person is in any doubt as to the contents of this Presentation, they should seek independent advice from a person who is authorised for the purposes of FSMA and who specialises in advising in investments of this kind. This Presentation is being supplied to you solely for your information. While the information contained herein has been prepared in good faith, neither Conroy Gold and Natural Resources Plc ("Conroy Gold" or the "Company") nor its shareholders, directors, officers, agents, employees or advisers give, has given or has authority to give, any representations or warranties (express or implied) as to, or in relation to, the accuracy, reliability or completeness of the information in this Presentation, or any revision thereof, or of any other written or oral information made or to be made available to any interested party or its advisers and liability therefore is expressly disclaimed. This Presentation does not constitute or form part of, any offer or invitation to sell or issue, or any solicitation of any offer to purchase or subscribe for, any shares in the Company nor shall it or any part of it, or the fact of its distribution, form the basis of, or be relied upon in connection with, or act as any inducement to enter into any contract therefore. No reliance may be placed for any purpose whatsoever on the information contained in this Presentation or on its completeness, accuracy or fairness thereof, nor is any responsibility accepted for any errors, misstatements in, or omission from, this Presentation or any direct or consequential loss however arising from any use of, or reliance on, this Presentation or otherwise in connection with it. By accepting this Presentation you confirm, represent and warrant that you have consented to receive inside information (as defined in the Criminal Justice Act 1993 and the Financial Services and Markets Act 2000 (as amended) (the "UK Acts") and/or in Market Abuse (Directive 2003/6/EC) Regulations 2005 S.I. No. 342 of 2005 (the "Regulations") and/or Part 5 of the Companies Act 1990 (the "Irish Acts") and you agree not to deal in any securities of the Company until such time as such inside information has been made public and until such time that the Placing has been publicly announced by the Company or the Company decides not to proceed with the Placing. This Presentation may not be reproduced or redistributed, in whole or in part, to any other person, or published, in whole or in part, for any purpose without the prior consent of the Company. The contents of this Presentation are confidential and are subject to updating, completion, revision, further verification and amendment without notice. Notwithstanding the above, in the United Kingdom, this Presentation is being distributed on request only to, and is directed at, authorised persons or exempt persons within the meaning of FSMA or any order made thereunder or to those persons falling within the following articles of the Financial Services and Markets Act 2000 (Financial Promotion) Order 2005 (as amended) (the "Financial Promotion Order"): Investment Professionals (as defined in Article 19(5)) and High Net Worth Companies (as defined in Article 49(2)). Outside the United Kingdom, the Presentation is only being sent to persons to whom it may be otherwise lawfully communicated to. Persons who do not fall within any of these definitions should not rely on this Presentation nor take any action upon it but should return it immediately to the Company. By accepting this Presentation the recipient represents and warrants that they are a person who falls within the above description of persons entitled to receive this Presentation. This Presentation is exempt from the general restriction in section 21 of FSMA relating to the communication of invitations or inducements to engage in investment activity on the grounds that it is made only to certain categories of persons. Neither this Presentation nor any copy of it should be distributed, directly or indirectly, by any means (including electronic transmission) to any persons with addresses in the United States of America (or any of its territories or possessions) (together, the "US"), Canada, Japan, Australia, or the Republic of South Africa, or to any corporation, partnership or other entity created or organised under the laws thereof, or in any other country outside the United Kingdom where such distribution may lead to a breach of any legal or regulatory requirement. The recipients should inform themselves about and observe any such requirements or relationship. The Company's ordinary shares have not been, and are not expected to be, registered under the United States Securities Act 1933, as amended, (the "US Securities Act") or under the securities laws of any other jurisdiction, and are not being offered or sold, directly or indirectly, within or into the US, Canada, Japan, Australia, or the Republic of South Africa or to, or for the account or benefit of, any US persons or any national, citizen or resident of the US, Canada, Japan, Australia or the the Republic of South Africa, unless such offer or sale would qualify for an exemption from registration under the US Securities Act and/or any other applicable securities laws. Sanlam Securities UK Limited, which is authorised and regulated by the Conduct: Financial Conduct Authority, is the Company's nominated advisor for the purposes of the AIM Rules. Sanlam Securities UK Limited's responsibilities as the Company's nominated advisor under the AIM Rules are owed solely to the London Stock Exchange plc and are not owed to the Company or to any Director or any other person. None of the Directors or Hybridan LLP ("Hybridan") acting as broker to the Company nor any of their directors, officers, employees, agents, affiliates or representatives or advisers or any other person makes any representation or warranty, express or implied, as to the accuracy or completeness of the information or opinions contained in this document. Nothing contained herein should be relied upon as a promise or representation as to the future. None of Hybridan nor their respective members, directors, officers, employees, agents, affiliates or representatives or advisers nor any other person accepts any obligation or responsibility to advise any person of changes in the information set forth herein after the date hereof. Hybridan is acting for the Company in respect of the Placing and for no one else and will not be responsible to anyone other than the Company for providing the protections afforded to clients of Hybridan nor for providing advice in relation to the Placing or any other matter referred to herein. Further, Hybridan has not authorised the contents of, or any part of, this document. To the fullest extent permitted by law, none of Hybridan (nor their respective members, directors, officers, employees, agents or representatives) nor any other person accepts any liability whatsoever for any errors, omissions or inaccuracies in such information or opinions or for any loss, cost or damage suffered or incurred howsoever arising, directly or indirectly, from any use of this document or its contents or otherwise in connection with the subject matter of this document or any transaction.

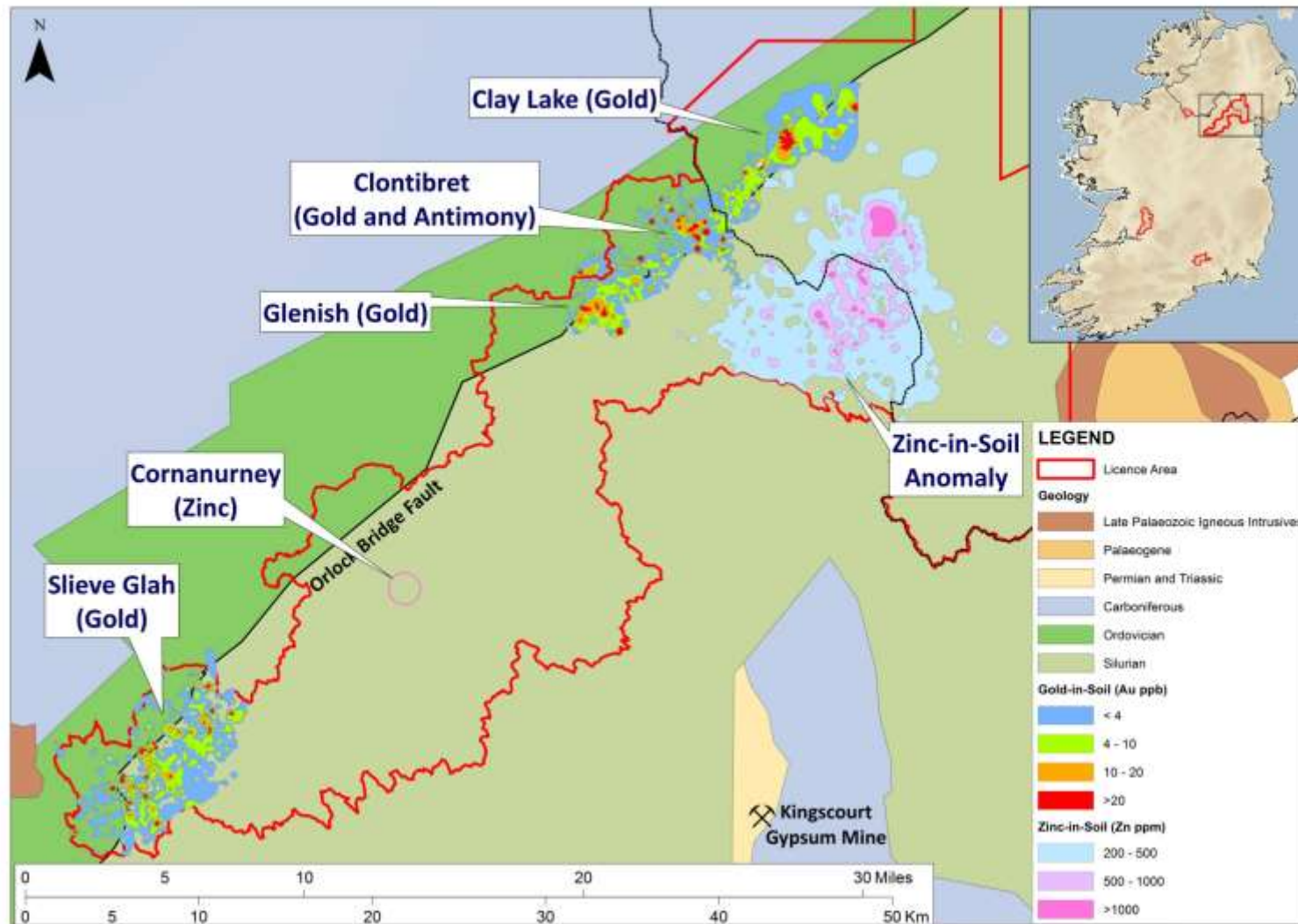
**Forward-looking Statements** This Presentation or documents referred to in it contain forward-looking statements. These statements relate to the future prospects developments and business strategies of the Company and its subsidiaries (the "Group"). Forward-looking statements are identified by the use of such terms as "believe", "could", "envisage", "estimate", "potential", "intend", "may", "plan", "will" or the negative of those, variations or comparable expressions, including references to assumptions. The forward-looking statements contained in this Presentation are based on current expectations and are subject to risks and uncertainties that could cause actual results to differ materially from those expressed or implied by those statements. If one or more of these risks or uncertainties materialises, or if underlying assumptions prove incorrect, the Group's actual results may vary materially from those expected, estimated or projected. Given these risks and uncertainties, potential investors should not place any reliance on forward-looking statements. These forward-looking statements speak only as at the date of this Presentation. No undertaking, representation, warranty or other assurance, expressed or implied, is made or given by or on behalf of the Company, any of their respective directors, officers, partners, employees or advisers or any other person as to the accuracy or the completeness of the information or opinions contained herein and to the extent permitted by law no responsibility or liability is accepted by any of them for any such information or opinions. Notwithstanding the aforesaid, nothing in this paragraph shall exclude liability for any representation or warranty made fraudulently.



# 30 MILE GOLD TREND DISCOVERED WITH A SERIES OF MAJOR GOLD TARGETS IDENTIFIED TO DATE ALONG TREND



CONROY  
GOLD AND NATURAL RESOURCES



# GOLD POTENTIAL ON LICENCES HELD

## CONCEPTUAL STUDIES SUGGEST 15 – 20+ MILLION OUNCES



CONROY  
GOLD AND NATURAL RESOURCES

### 30 MILE GOLD TREND

- ◆ Clay Lake
- ◆ Clontibret
- ◆ Glenish
- ◆ Slieve Glah

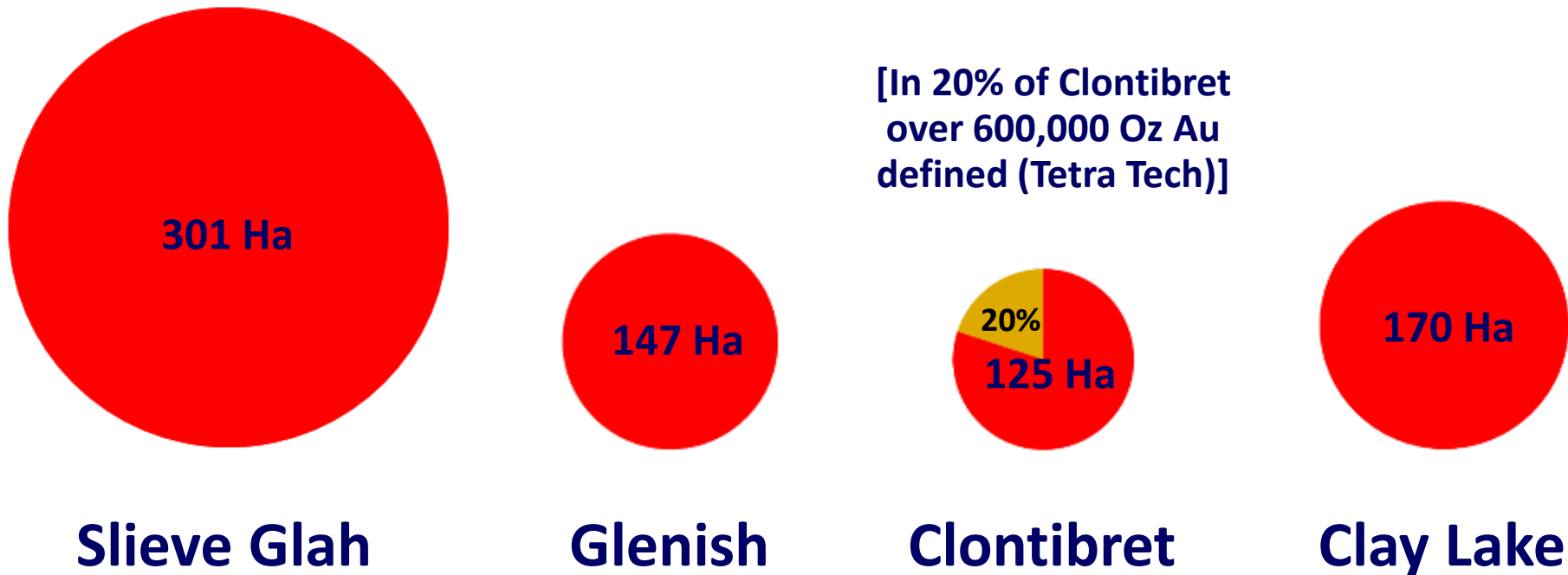
### MAJOR GOLD TARGETS

The projection of 15 – 20+ million ounces, which is conceptual, is based on a 1m oz JORC-compliant gold resource outlined in 20% of the Clontibret gold target, the potential of the remaining 80% of the Clontibret gold target, the gold discovery at the Clay Lake gold target and the other major targets with gold proven-in-bedrock discovered on the Company's licences.

To date there has been insufficient exploration carried out to define such a mineral resources and there is no certainty that exploration will result in resources of the above magnitude being realised.

# LONGFORD – DOWN MASSIF

## GEOCHEMICAL EXPRESSION OF MAJOR GOLD TARGETS

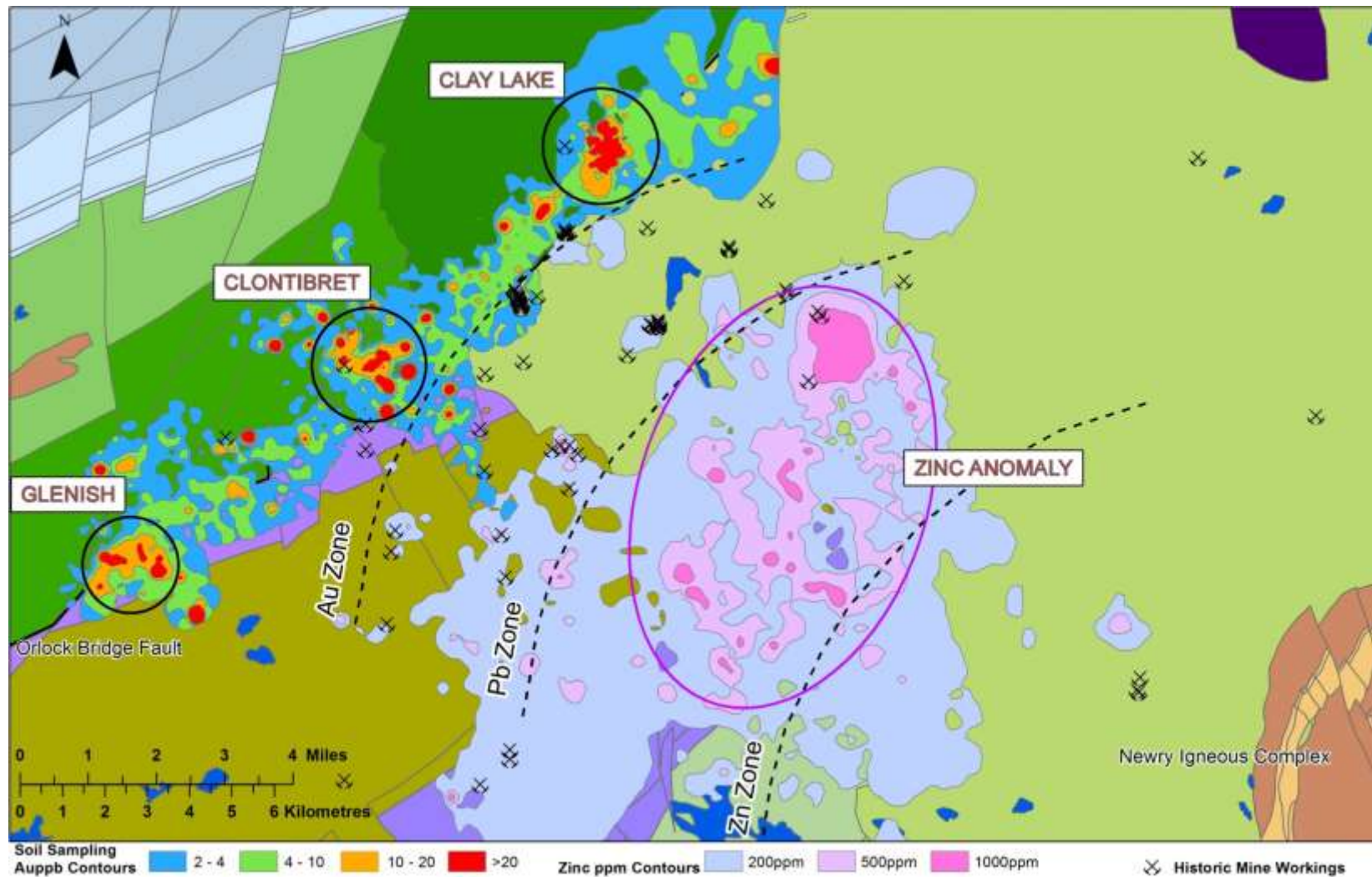


Geochemical Surface Expression (+10ppb Au) In Hectares Of Major Gold Targets (All of which have one or more gold-in-bedrock intersections of at least 1 metre over 1 g/t gold)

# EXTENSIVE METALLIFEROUS SYSTEM PRESENT ZINC → LEAD → GOLD WITHIN LICENCE AREA



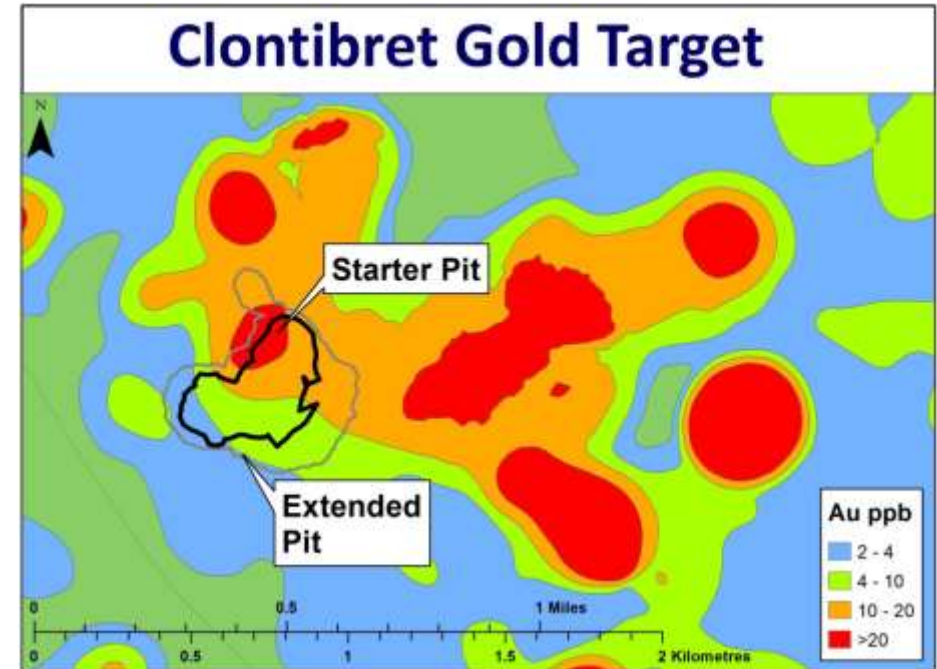
CONROY  
GOLD AND NATURAL RESOURCES





# FIRST GOLD (AND ANTIMONY) MINE PLANNED AT CLONTIBRET IN COUNTY MONAGHAN

- ◆ FIRST MINE PLANNED WILL BE ON 20% OF THE CLONTIBRET GOLD TARGET IN COUNTY MONAGHAN
- ◆ MINE SCOPING STUDIES COMPLETED BY INDEPENDENT CONSULTANTS (TETRA TECH)
- ◆ POSITIVE TECHNICAL AND FINANCIAL RESULTS
- ◆ SIGNIFICANT GOLD INTERSECTIONS ALSO RECORDED OUTSIDE INITIAL MINE AREA eg. 11m @ 5.34g/t and 21m @ 1.82g/t Au
- ◆ THE POTENTIAL RESOURCE AT CLONTIBRET IS CURRENTLY ESTIMATED AT c. 2-5M OZ Au (+Sb)



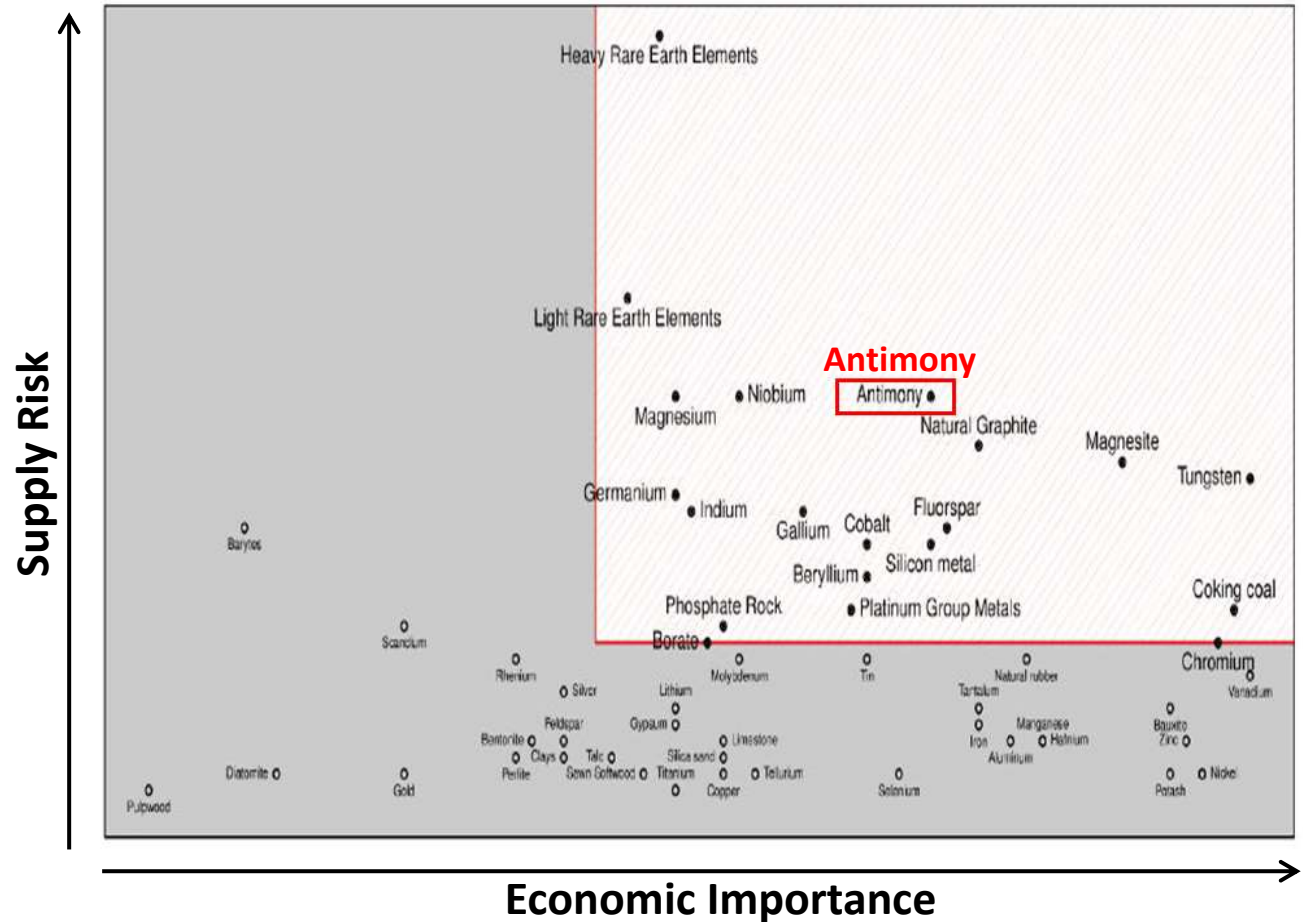
CLONTIBRET GOLD TARGET SHOWING OPEN PIT OUTLINE

# ANTIMONY – CRITICAL RAW MATERIAL FOR EU



CONROY  
GOLD AND NATURAL RESOURCES

- ◆ **Critical Raw Material For EU. A Large Supply Deficit Is Forecast**
- ◆ **Used In Flame Retardants And In Emerging Technologies Such As ATO And Micro Capacitors**
- ◆ **Elevated Antimony Contents In Gold Flotation Concentrate**
- ◆ **Potentially Economic Quantities Of Antimony In Clontibret Mine**



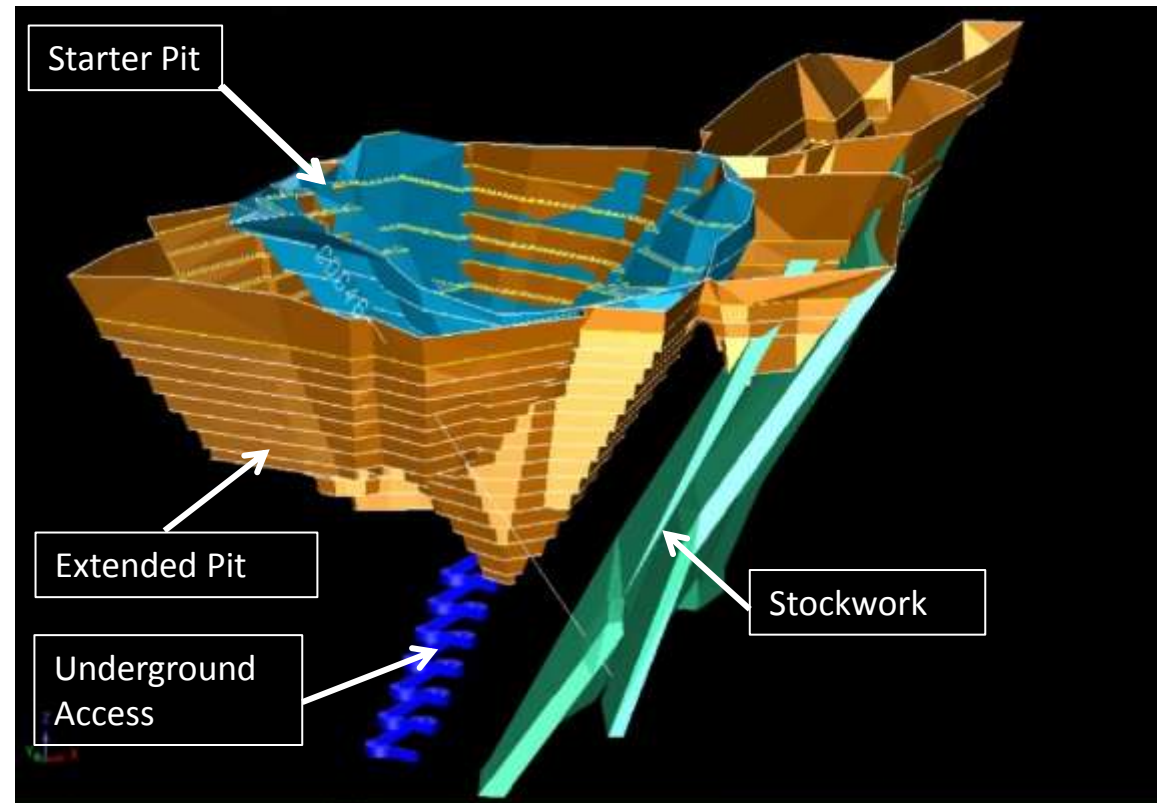
SOURCE: EU (2013) CRITICAL ASSESSMENT



# CLONTIBRET GOLD MINE DEFINITIVE MINING PLAN IN COURSE OF DEVELOPMENT

## TWO PHASES ENVISAGED

- ◆ PHASE 1 (c.8 years)  
STARTER PIT AND EXTENDED PIT
- ◆ PHASE 2 (FURTHER 5-10+ years)  
TO COMPRISE UNDERGROUND  
MINING AND / OR FURTHER  
SURFACE PIT(S) OR EXTENSION OF  
THE CURRENT EXTENDED PIT

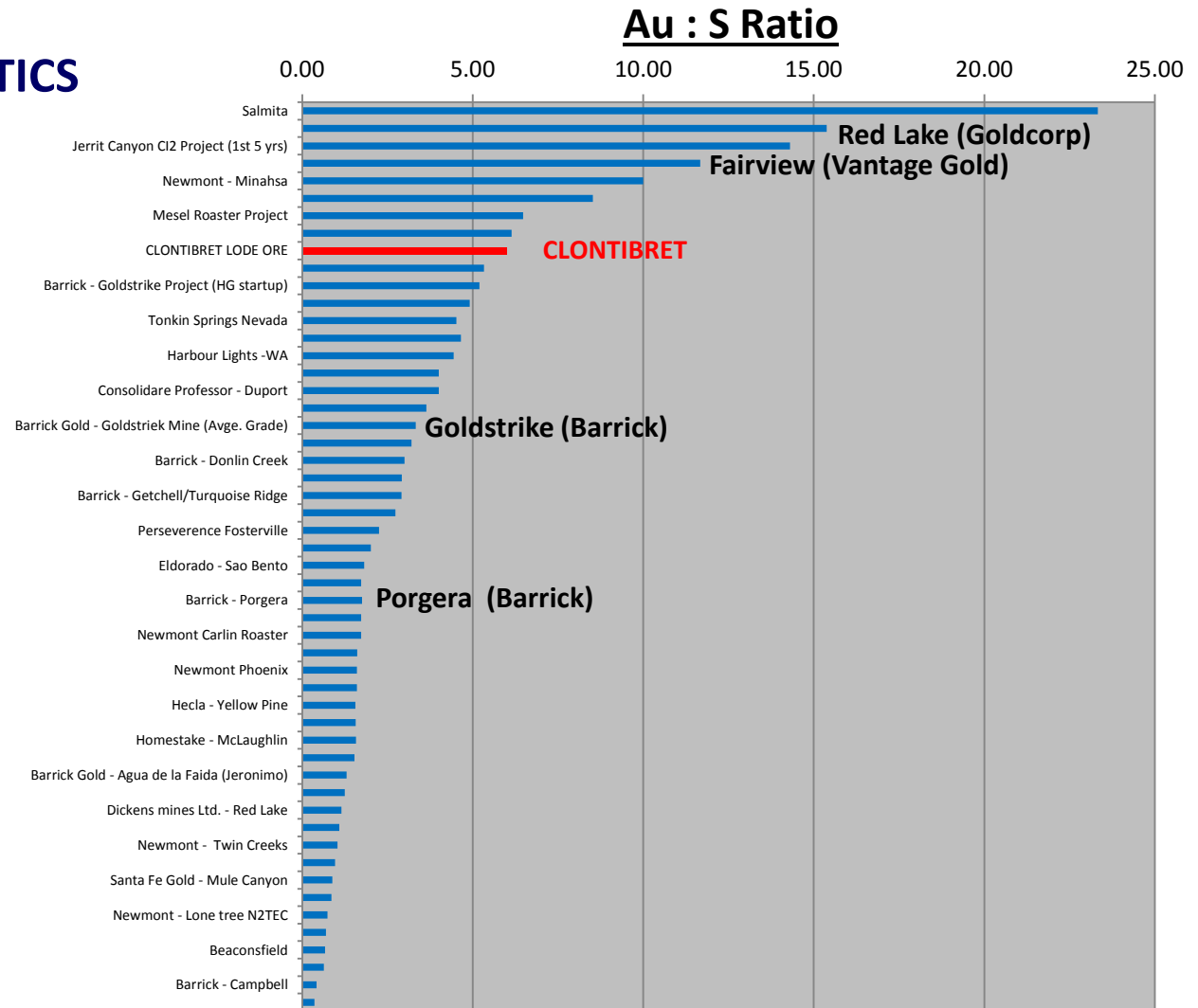


# CLONTIBRET ORE – FAVOURABLE METALLURGY

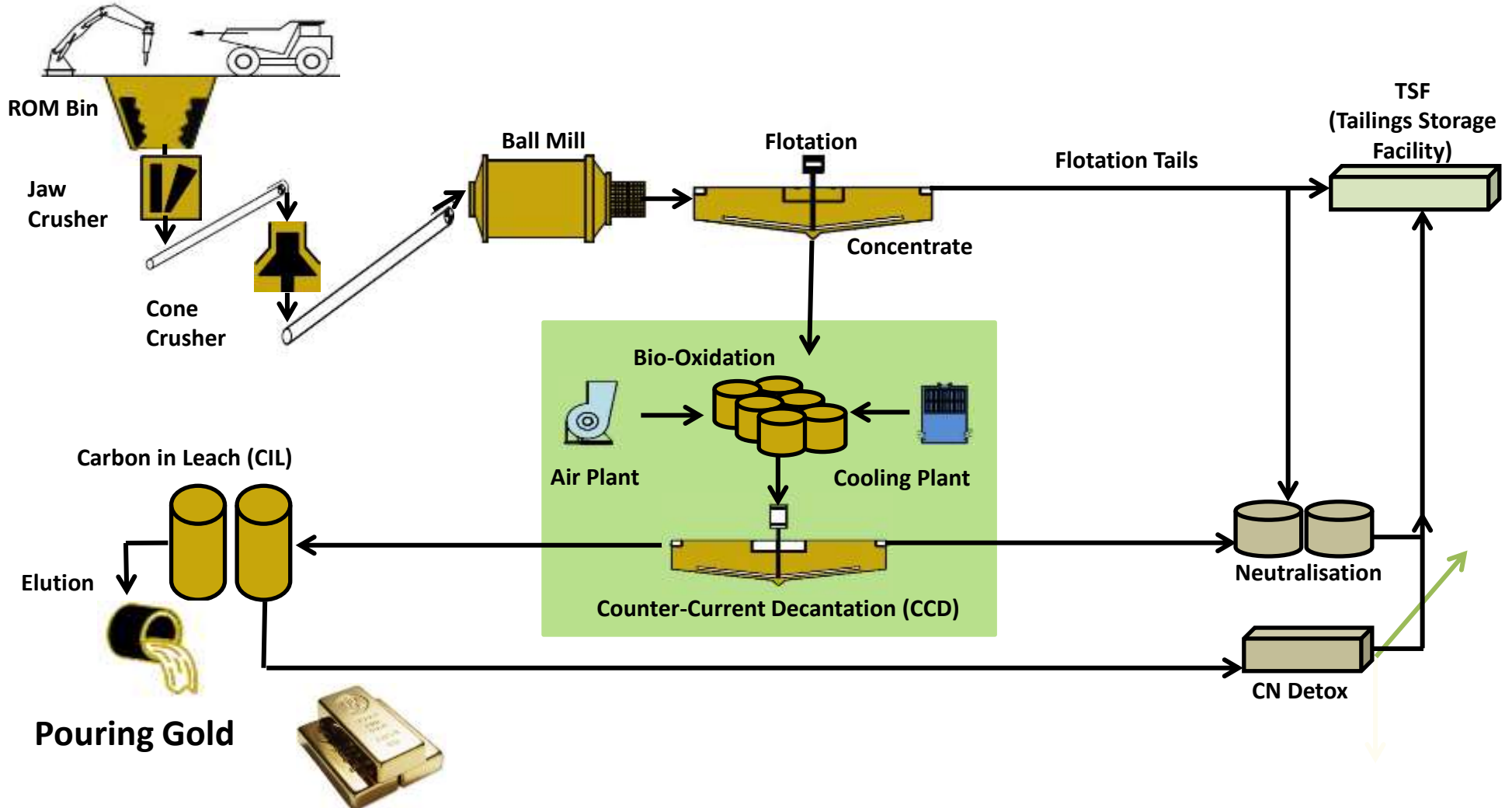
## METALLURGICAL CHARACTERISTICS OF CLONTIBRET ORE INCLUDE:

◆ **HIGH Au : S RATIO**

◆ **HIGH GOLD : CONCENTRATE RATIO**



# PROCESS FLOW DIAGRAM





# CLONTIBRET - PHASE 1 FINANCIAL HIGHLIGHTS



**CONROY**  
GOLD AND NATURAL RESOURCES

**CAPITAL COSTS:** \$42.5 Million

**OPERATING COSTS (TOTAL CASH COSTS):**

Starter Pit: \$490/oz

Phase 1 Pit: \$705/oz

**TOTAL PRODUCTION COSTS:**

Starter Pit: \$900/oz

Phase 1 Pit: \$880/oz

**NET PRESENT VALUE (8% and gold price of \$1,300/oz)** \$52.3 Million

**INTERNAL RATE OF RETURN:** 62%

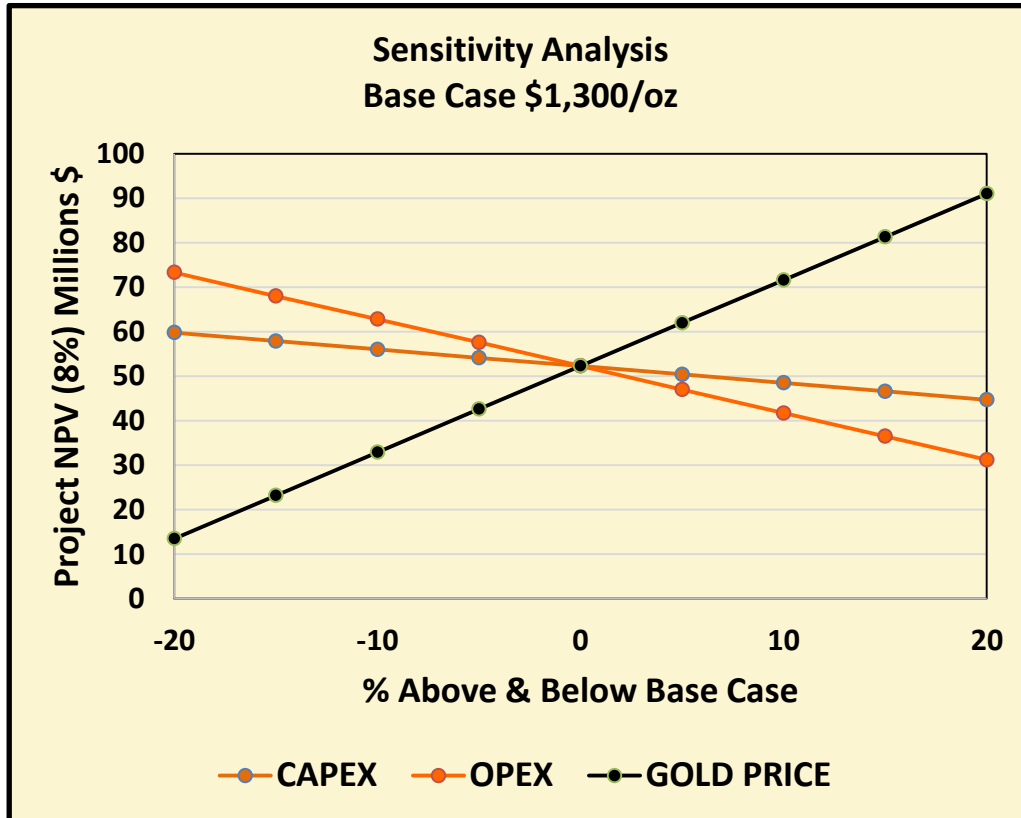
**PAYBACK:** Year 2 of Operation

- ◆ Starter pit de-risks the project
- ◆ Capital costs relatively low due to favourable metallurgy and infrastructure
- ◆ Significant underground and open pit expansion potential

# CLONTIBRET - PHASE 1 FINANCIAL HIGHLIGHTS



**CONROY**  
GOLD AND NATURAL RESOURCES



SENSITIVITY ANALYSIS	NPV (8%) (US \$ M)	IRR (%)	GOLD PRICE (US\$)
- 20%	13.5	24	1,040
- 15%	23.2	35	1,105
- 10%	32.9	44	1,170
- 5%	42.6	54	1,235
<b>BASE CASE</b>	<b>52.3</b>	<b>62</b>	<b>1,300</b>
+ 5%	62	71	1,365
+ 10%	71.6	79	1,430
+ 15%	81.3	86	1,495
+ 20%	91	95	1,560

# LONGFORD – DOWN MASSIF CLAY LAKE GOLD TARGET



CONROY  
GOLD AND NATURAL RESOURCES

- ◆ HIGHEST GOLD-IN-SOIL VALUES TO DATE (UP TO 1.53 g/t Au) - DOUBLE THOSE RECORDED AT CLONTIBRET. TARGET AREA 2Km BY 1Km.
- ◆ STRUCTURAL STUDY SUGGESTS POTENTIAL FOR HIGH TONNAGE AND OVERALL GOLD CONTENT
- ◆ DRILLING INTERSECTIONS 98.6m @ 0.57g/t Incl. 11.50m @ 1.44g/t
- ◆ 5 METRES ON SURFACE @ 3.02g/t Au



EXAMINING TRENCHED OUTCROP



SURFACE CARBONACEOUS STOCKWORK OUTCROP



CLAY LAKE NUGGET - GOLD CONTENT 28g



TRENCHING AT CLAY LAKE



# LONGFORD – DOWN MASSIF CLAY LAKE GOLD TARGET

- ◆ **CLAY LAKE, A CARBONACEOUS SHALE HOSTED GOLD DEPOSIT, ENCOMPASSES MANY OF THE GEOLOGICAL ATTRIBUTES OF MAJOR SEDIMENT-HOSTED GOLD DEPOSITS**
  
- ◆ **EXAMPLES OF THESE GOLD DEPOSITS INCLUDE:**
  - **THE 17.4M OZ KINROSS MINE (PARACATU) WHICH AT A GRADE OF 0.41g/t GOLD AND A COST OF US\$720/OZ PRODUCED OVER 500,000 OZ GOLD IN 2013**
  
  - **THE MULTI-MILLION OUNCE GOLD DEPOSITS AT TIEN SHAN SUCH AS THE 169.3M OZ MURUNTAU MINE IN UZBEKISTAN, ONE OF THE LARGEST GOLD DEPOSITS IN THE WORLD**
  
- ◆ **THE WIDTHS ENCOUNTERED AT CLAY LAKE SUGGEST THE POTENTIAL FOR VERY HIGH TONNAGE AND OVERALL GOLD CONTENT**

# LONGFORD – DOWN MASSIF MINING IN IRELAND

- ◆ ESTABLISHED MINING TRADITION
- ◆ IRELAND RANKS 11<sup>th</sup> IN THE PRESTIGIOUS FRASER INSTITUTE RATINGS
- ◆ DISCOVERY OF GALMOY ZINC ORE BODIES LED TO IRELAND RANKING 10<sup>th</sup> IN THE WORLD PRODUCTION OF ZINC
- ◆ LONGFORD – DOWN MASSIF DISCOVERIES MAY LEAD TO SIGNIFICANT GOLD PRODUCTION IN IRELAND PLUS FURTHER BASE METAL PRODUCTION INCLUDING THE STRATEGIC MINERAL ANTIMONY



EXPLORATION TEAM IN LONGFORD - DOWN MASSIF

# LONGFORD – DOWN MASSIF SUMMARY



**CONROY**  
GOLD AND NATURAL RESOURCES

- ◆ **CLONTIBRET – DEFINITIVE MINE DEVELOPMENT PLAN**
- ◆ **HIGH GRADE STARTER PIT DE-RISKS THE PROJECT**
- ◆ **PAYBACK WITHIN FIRST 2 YEARS OF PRODUCTION**
- ◆ **SIGNIFICANT UNDERGROUND AND OPEN PIT EXPANSION POTENTIAL**
- ◆ **OVERALL POTENTIAL OF AREA 15 – 20+ MILLION OZ GOLD (CLAY LAKE to SLIEVE GLAH) + BASE METAL POTENTIAL**



GOLD POURING AT POGO MINE IN ALASKA